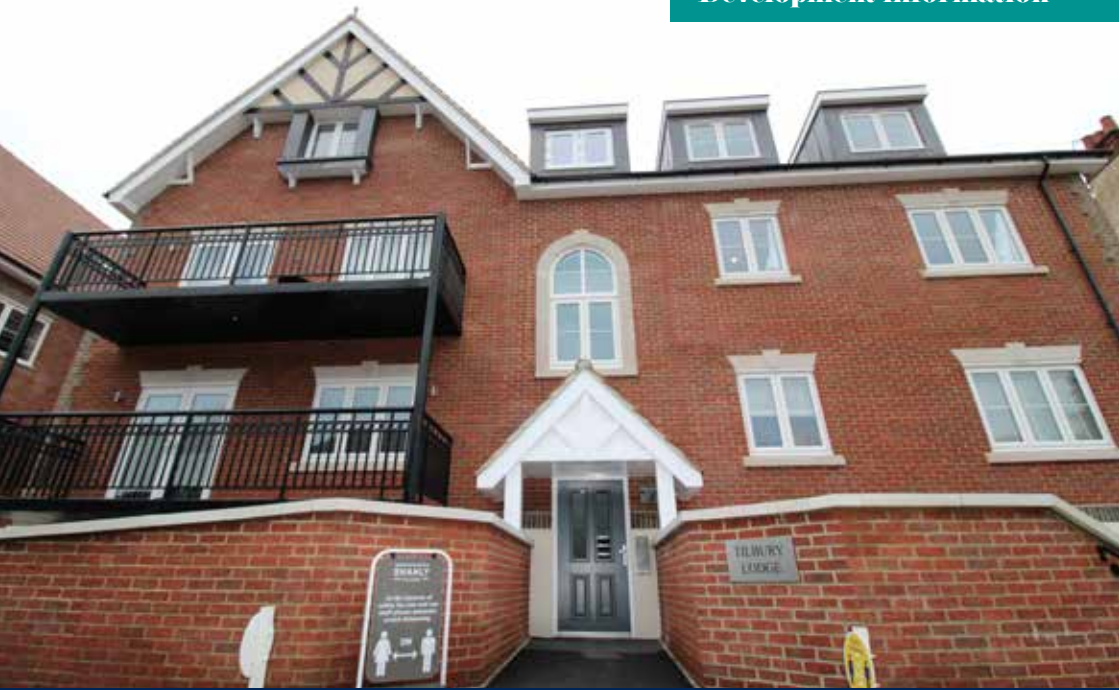


# Tilbury Lodge

Development information



Located in South Croydon, ccha are delighted to present Tilbury Lodge, a housing development comprising of 30 apartments, 9 of which are owned by ccha. The architects Taylor Roberts Ltd and contractors Shanly Homes have created stylish and affordable apartments to a high specification. Completed in December 2020, the development took 102 weeks to complete with a development cost of £2,125,000.00.

Upcoming **ccha** developments can be found on Twitter by using **#cchaConnections**

In partnership with



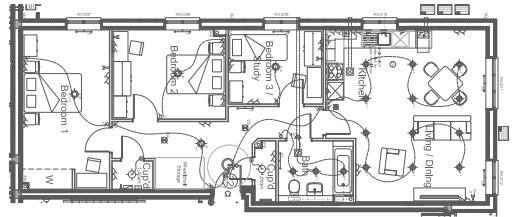
tel: **020 8680 7532** freephone: **0800 054 6710**  
email: **customers@ccha.biz** web: **www.ccha.biz**

# Tilbury Lodge

**ccha** own 3 Shared Ownership apartments with 6 apartments for London Affordable Rent.

Located near South Croydon, the apartments have fast links into Central London, with off street parking available on selected plots at the development.

## Typical floor plan



## Specification

### Two 3-Bedroom and One 2-Bedroom Apartments for Shared Ownership

- Fitted kitchen with integrated appliances
- Premium carpet included throughout living areas
- Fitted wardrobes in master bedroom
- Audio door entry system with access via keypad number code

## Images of the development

